

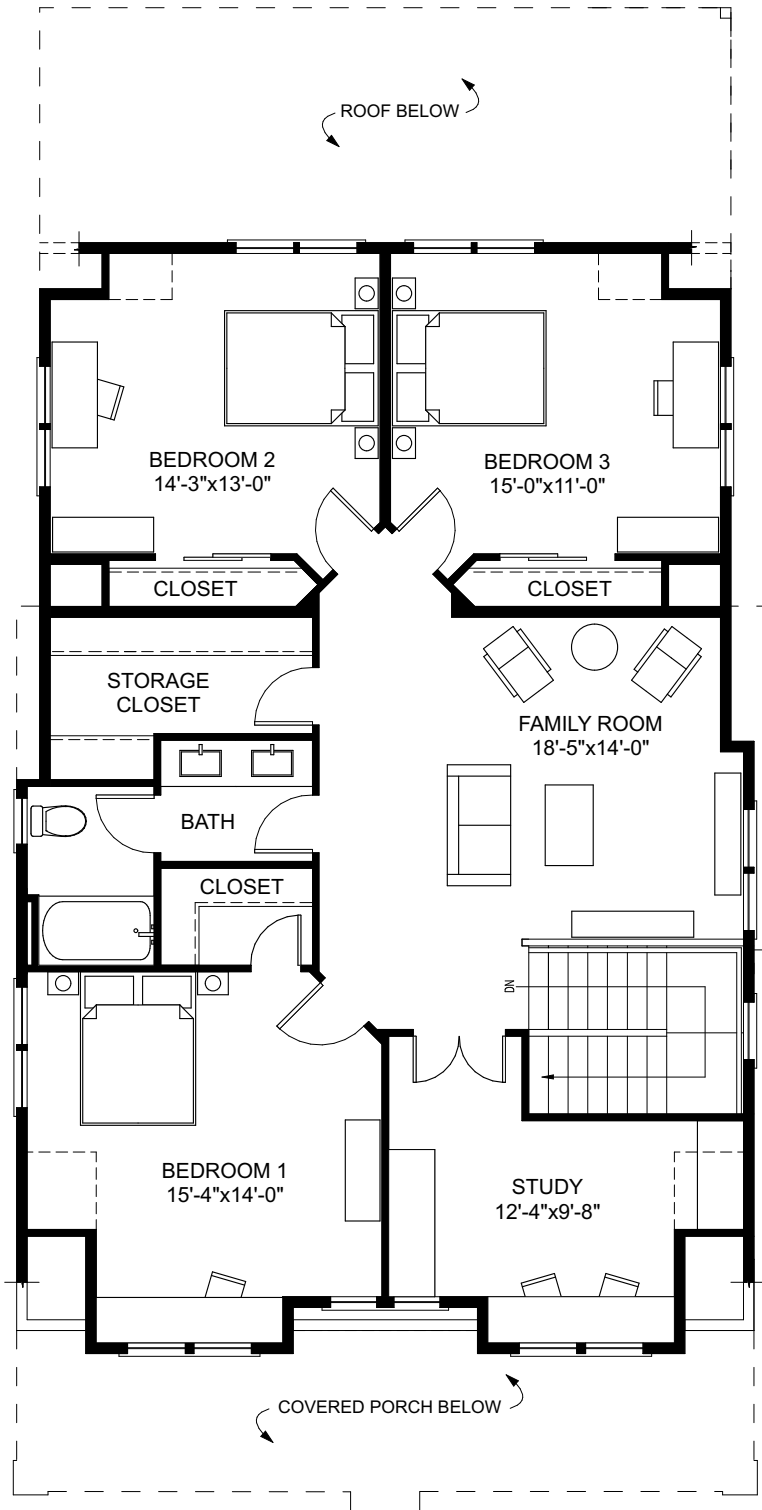
FIRST FLOOR



**BUNGALOW
COMPANY**

THE HOLLY

2 STORY | 4 BEDROOMS | 2.5 BATHS
 OVERALL DIMENSIONS: 33'-0" x 64'-5" (26'-0" +/- TALL) | 3,166 SQ.FT.
 FIRST FLOOR: 1,800 SQ. FT. | SECOND FLOOR: 1,366 SQ. FT.
 FOUNDATION: UNFINISHED BASEMENT - ICF CONSTRUCTION



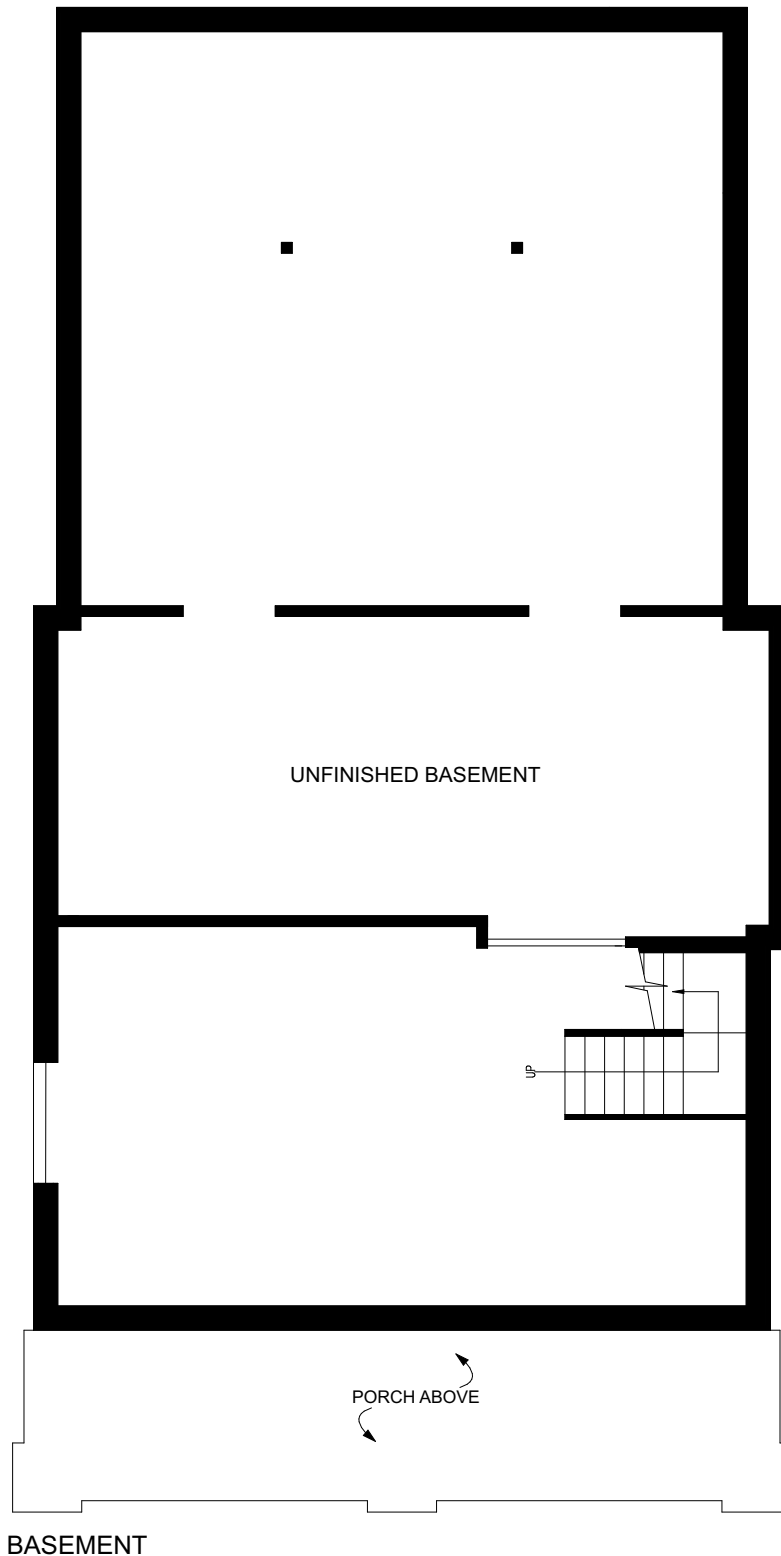
SECOND FLOOR



**BUNGALOW
COMPANY**

THE HOLLY

2 STORY | 4 BEDROOMS | 2.5 BATHS
 OVERALL DIMENSIONS: 33'-0" x 64'-5" (26'-0" +/- TALL) | 3,166 SQ.FT.
 FIRST FLOOR: 1,800 SQ. FT. | SECOND FLOOR: 1,366 SQ. FT.
 FOUNDATION: UNFINISHED BASEMENT - ICF CONSTRUCTION



BASEMENT



**BUNGALOW
COMPANY**

THE HOLLY

2 STORY | 4 BEDROOMS | 2.5 BATHS
OVERALL DIMENSIONS: 33'-0" x 64'-5" (26'-0" +/- TALL) | 3,166 SQ.FT.
FIRST FLOOR: 1,800 SQ. FT. | SECOND FLOOR: 1,366 SQ. FT.
FOUNDATION: UNFINISHED BASEMENT - ICF CONSTRUCTION